

PWM 908 Washer Installation Questionnaire

Thank you for your recent purchase of a Miele commercial appliance. Please read the attached installation specifications carefully in order to effectively prepare your site for equipment installation.

Careful adherence to the guidelines outlined here will assist you in complying with our site preparation requirements. All necessary connections, including electrical, plumbing and drain, must be within five feet of the machine location. Qualified electricians and plumbers should perform this work in order to ensure adherence to building and electrical codes.



After you have prepared your installation site in accordance with Miele standards, please complete this document and email it to proservice@mieleusa.com. Your washer installation will be scheduled after our experts have reviewed your documents and determined that your site is ready. During this visit, the technician will also provide machine startup information and basic training of personnel.

Please be aware that, in the event that the service technician arrives at your location for installation and determines that the site is not adequately prepared for installation, additional charges will apply.

We look forward to receiving your completed site-preparation documents and providing you with industry-leading service for many years to come.

Customer / Project Name	
Company	
Address	
City / State	
Zip Code	
Contact Name	
Contact Title	
Contact Phone #	
Contact E-mail	

Please complete pages 1 & 2 and send to: **Miele Professional Service Department**
email to Proservice@mieleusa.com

PWM 908 Washer Installation Questionnaire

	Required	Available? Yes/No/NA	If no, what is available? N/A
Washer Dimensions	Overall machine dimensions (H x W x D) in inch. 33 15/32" x 23 13/16" x 28 7/64" (mm) (850 x 605 x 714)		
Electrical Connection	208VAC-240VAC 4.0-5.2Kw 60Hz Unit equipped with a 6.5' power cord with a NEMA L6-30 plug		
Cold Water Connection *	Cold water (KW) Permissible water flow pressure PSI (kPa) 14.5 – 145 (100 – 1,000) Required flow rate (cold water connection only) gal/min (l/min) 2.6 (10) Average water consumption (60°C (140°F) Standard program) gal/h (l/h) 10.5 (40) Connection to be provided on site, external thread according to DIN 44991 (flat seal) Inches ¾" Connection hose ½" with ¾" threaded union Connection hose length inch (mm) 61 (1,550)		
Hot Water Connection	Hot water (WW) Permissible water flow pressure PSI (kPa) 14.5 – 145 (100 – 1,000) Required flow rate gal/min (l/min) 2.9 (11) Average water consumption (60°C (140°F) Standard program) gal/h (l/h) 10.5 (40) Connection to be provided on site, external thread according to DIN 44991 (flat seal) Inches ¾" Connection hose ½" with ¾" threaded union Connection hose length inch (mm) 61 (1,550)		
Drain Connection	Max. temperature 194°F Drain hose (ext. diameter) 7/8" Connection hose length 59 1/16" Max Drain pump head height (from floor level) 39 3/8"		

***The PWM 908 Washer can operate with a cold water connection only if required. Wash times will be extended and additional programming is required.**


PWM 908 Washer Installation Questionnaire


Dimensions Metric - Imperial

Dimensions	
mm	inch
3	1/8
5	3/16
25	1
38	1 1/2
40	1 9/16
43	1 11/16
50	1 15/16
69	2 11/16
70	2 3/4
80	3 1/8
100	3 7/8
134	5 1/4
136	5 3/8
142	5 9/16
145	5 3/4
150	5 7/8
170	6 11/16
175	6 7/8
184	7 1/4
192	7 9/16

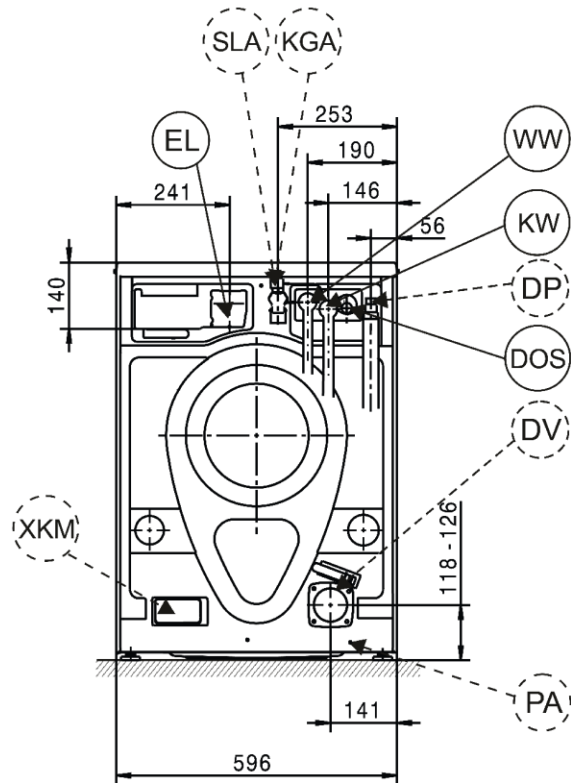
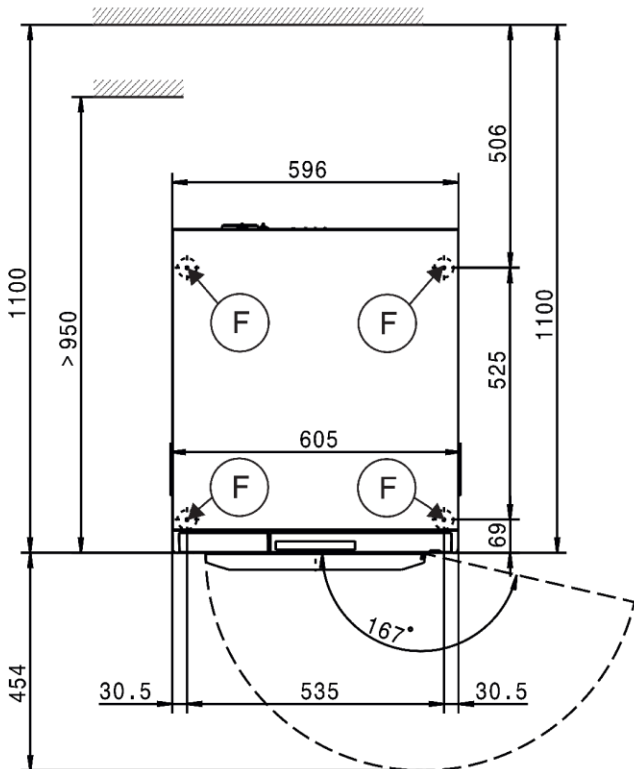
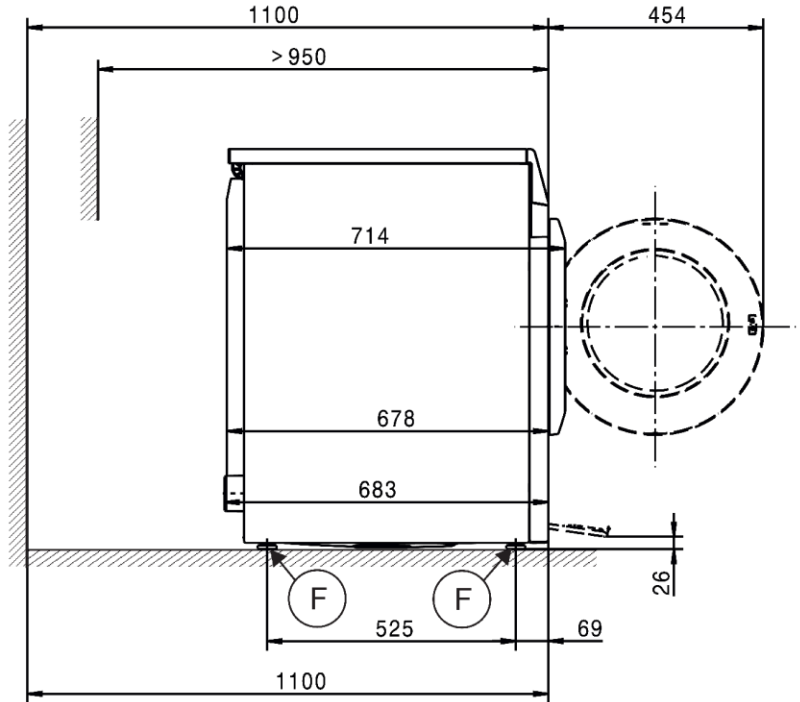
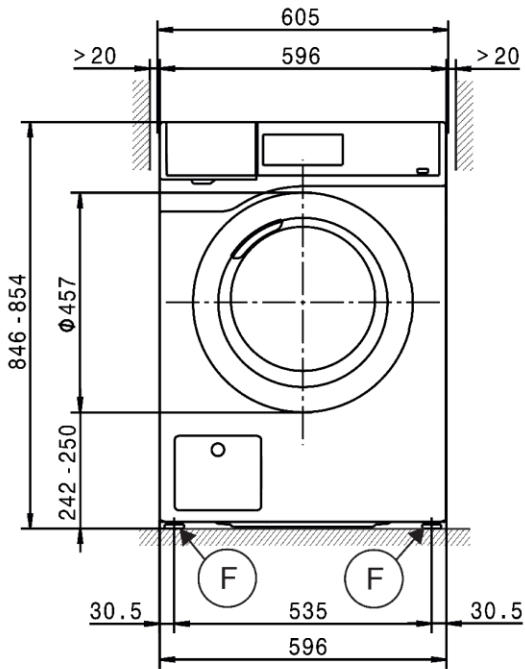
Dimensions	
mm	inch
243	9 9/16
262	10 5/16
345	13 9/16
378	14 7/8
380	14 15/16
400	15 3/4
482	19
540	21 1/4
700	27 1/2
800	31 1/2
850	33 7/16
896	35 1/4
900	35 1/2
990	39
1048	41 1/4
1300	51 1/8
1730	68 1/8
2447	96 5/16
2495	98 1/4
4000	157 1/2

Legend:

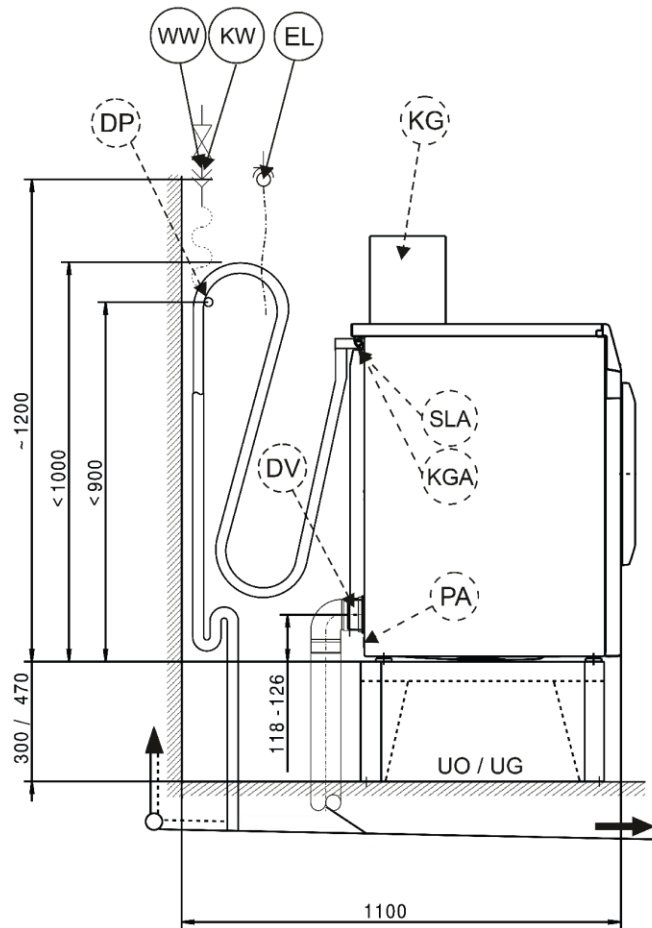
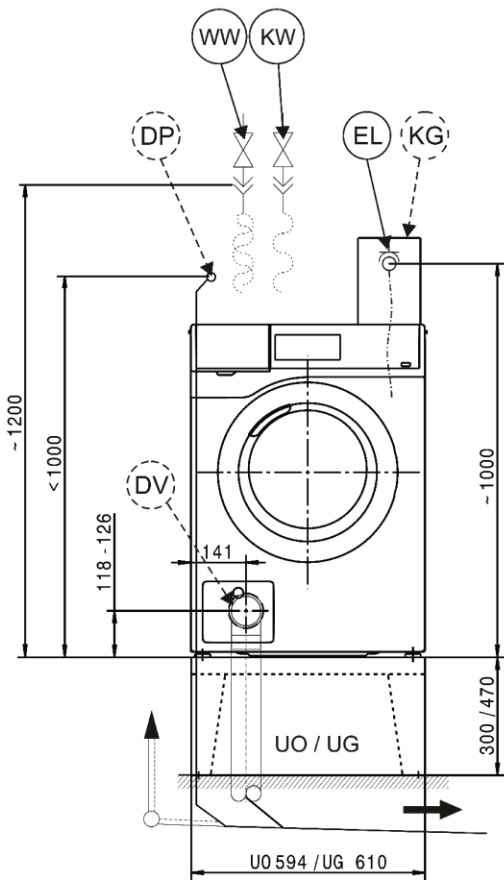
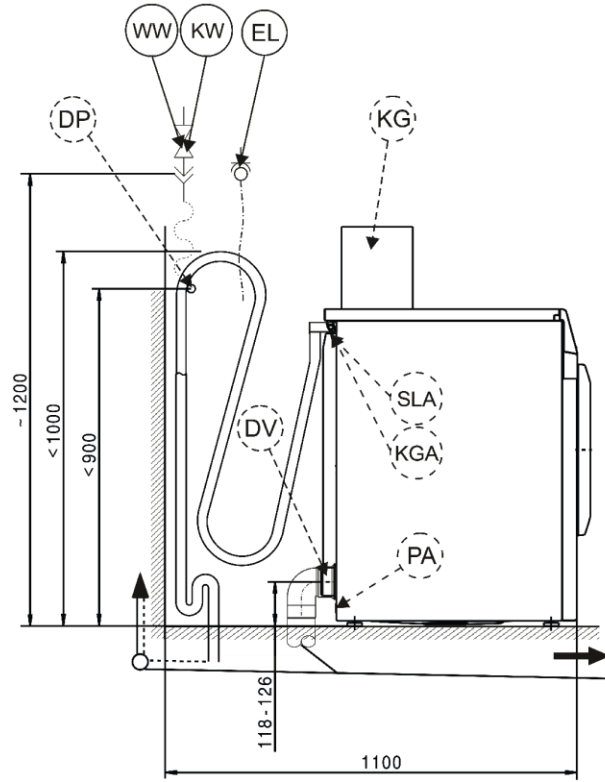
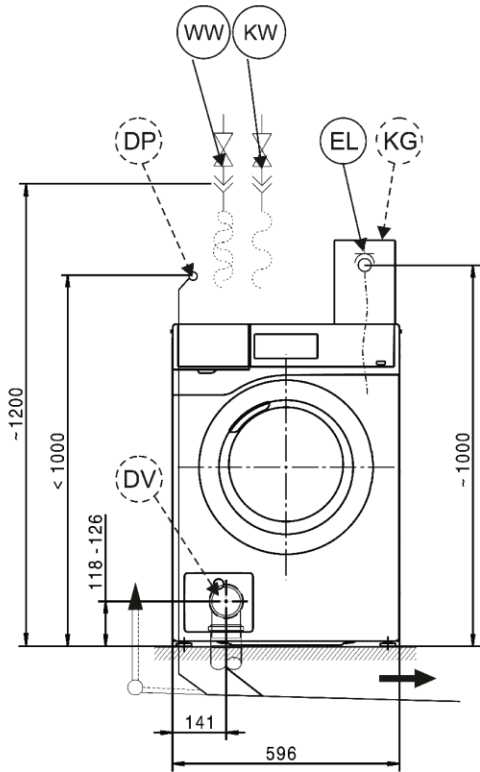
-  Connection required
- DV Drain valve
- AW Drain connection
- B Machine anchoring
- DOS Dispenser connection
- EL Electrical connection
- F Machine feet, adjustable
- KG Payment system
- KGA Payment system connection

-  Connection optional or required, depending on model
- KW Cold water connection
- DP Drain pump
- PA Equipotential bonding and grounding
- SLA Peak-load connection
- UG Closed plinth
- UO Open plinth
- APCL Washer-dryer stacking kit
- WW Hot water connection
- XKM Communication module

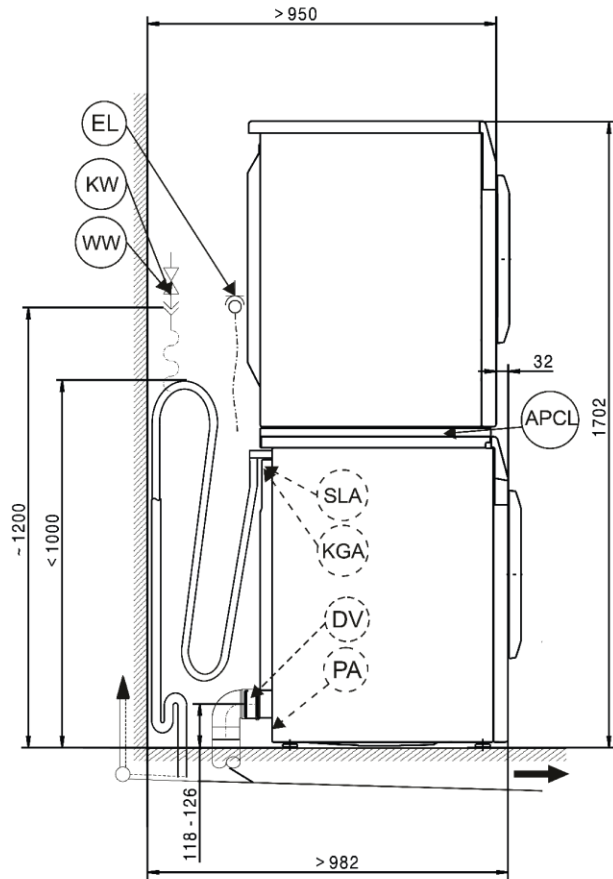
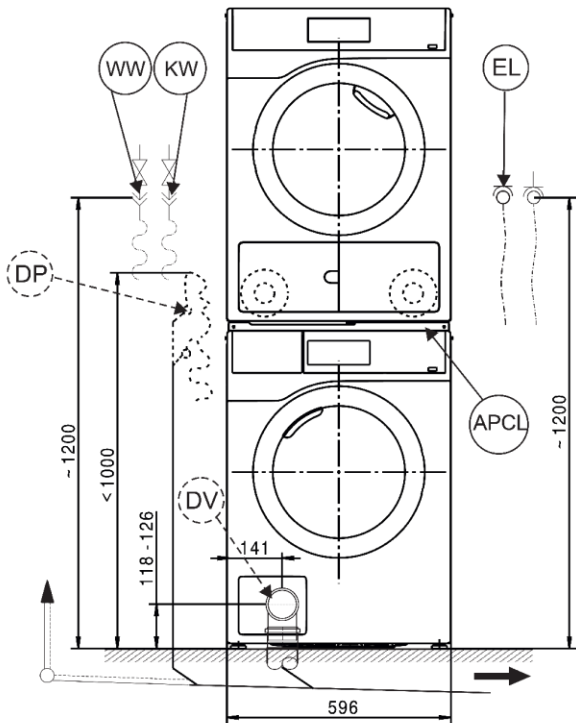
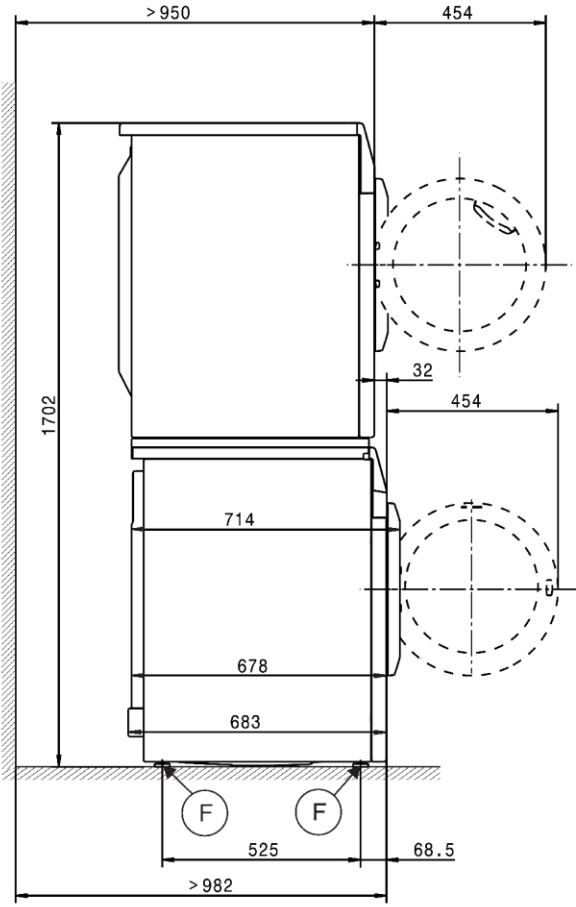
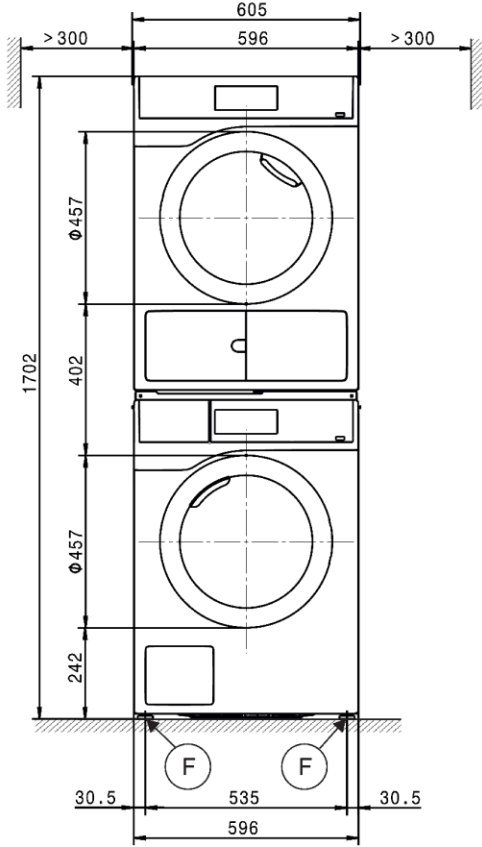
Machine Dimensions



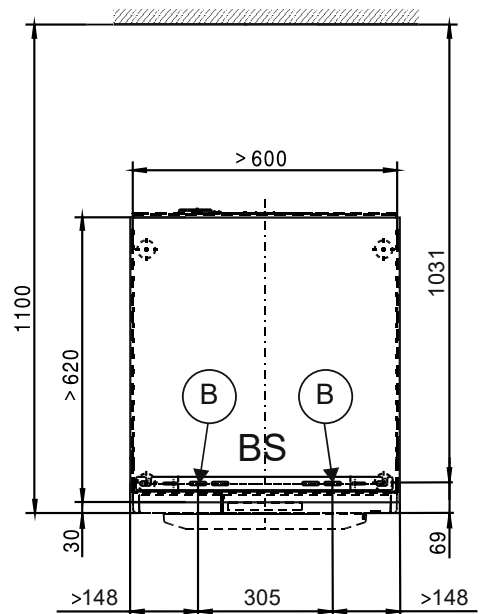
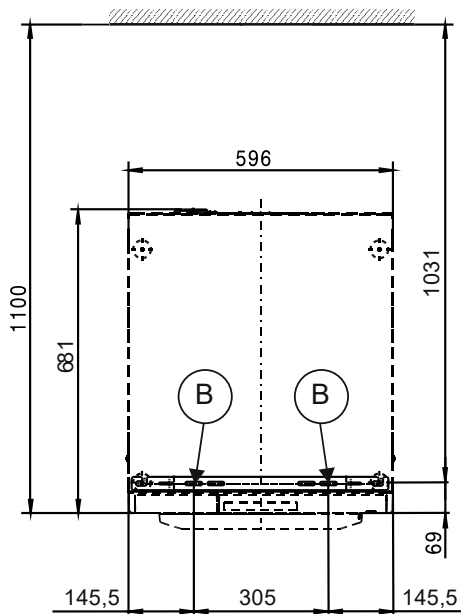
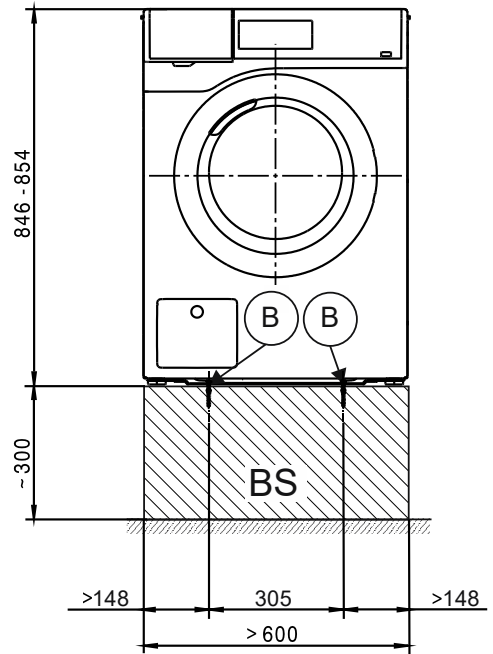
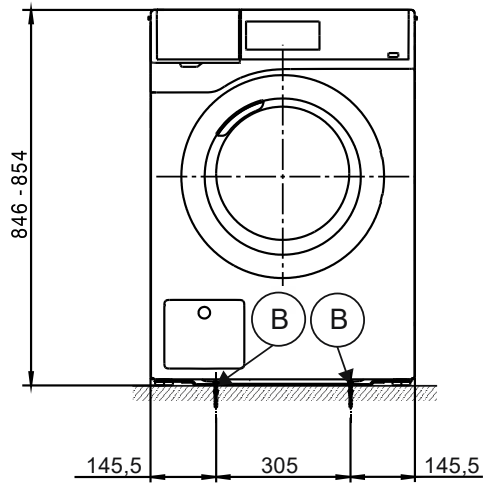
Installation



Washer-Dryer Stacked



Installation



Installation

